



# SURPLUS ATTACHMENT INVENTORY

EXPAND YOUR PRODUCTIVITY NOW

Work tool attachments expand your machines' productivity. And Empire has a huge variety of work tool attachments in stock now, ready to get to work for you. Check our current surplus inventory and find a new level of productivity today!



**1.800.937.2326**

Cashman Equipment Company, LLC ("Cashman") is an Empire Southwest Company, including all of Cashman's subsidiaries and affiliates together with their respective websites.

© 2023 Caterpillar. All Rights Reserved. CAT, CATERPILLAR, LET'S DO THE WORK, their respective logos, "Caterpillar Corporate Yellow," the "Power Edge" and Cat "Modern Hex" trade dress, as well as corporate and product identity used herein, are trademarks of Caterpillar and may not be used without permission.

**EMPIRE**





# SURPLUS ATTACHMENT INVENTORY



## 42" GD 315 BUCKET

**SALE \$5,000**

DESC: BUCKET-GD, 42"  
1.13YD3

UNIT #CE012968G  
SERIAL #MHC11059

WORKS WITH: 311 - 315 EXCAVATOR



## 777G BOARDS

**SALE \$11,500**

DESC: SIDEBOARDS,  
DUAL SLOPE

UNIT #CE012684Z  
SERIAL #CE012684Z-BG

WORKS WITH: 777G HAUL TRUCK



## 320/QCHPLT COUPLER

**SALE \$17,500**

DESC: COUPLER, PL MANUAL  
HYD. TILT B

UNIT #CE013016Q  
SERIAL #7XW01619

WORKS WITH: 320 - 325 EXCAVATOR



## 920 TIRES

**SALE \$15,000**

DESC: TIRES, 20.5 R25,  
MX, XHA2

UNIT #CE013559Y  
SERIAL #CE013559Y-BG

WORKS WITH: 920 WHEEL LOADER



## 920 TIRES

**SALE \$15,000**

DESC: TIRES, 20.5 R25,  
MX, XHA2

UNIT #CE013552Y  
SERIAL #CE013552Y-BG

WORKS WITH: 920 WHEEL LOADER



## 966 PALLET FORKS

**SALE \$6,000**

DESC: FORK,  
PALLET

UNIT #CE016143F  
SERIAL #7PW04586

WORKS WITH: 966 WHEEL LOADER



## 930 60" FORKS

**SALE \$3,250**

DESC: CARRIAGE, PAL CL3,  
61", IT

UNIT #CE017283F  
SERIAL #T210500402

WORKS WITH: 930 WHEEL LOADER



## A41/4 AUGER BIT

**SALE \$275**

DESC: BIT,  
AUGER 4"

UNIT #CE017065A  
SERIAL #CE017065A-RW

WORKS WITH: A41 AUGER



## 308 RAKE

**SALE \$4,000**

DESC: RAKE, 48",  
MHE 8T, 5 TINE

UNIT #CE017754Z  
SERIAL #27432522

WORKS WITH: 307 - 309 EXCAVATOR



## 420/24" WHEEL

**SALE \$4,000**

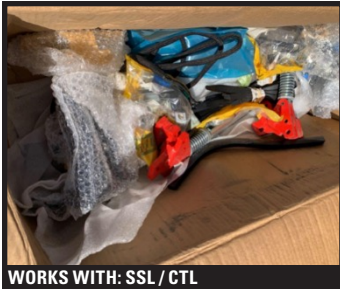
DESC: COMPACTION WHEEL,  
24", BL

UNIT #CE017607C  
SERIAL #A92011CW20052

WORKS WITH: 420 - 440 BHL

Price does not include freight. All items subject to availability.

# SURPLUS ATTACHMENT INVENTORY



## SSL QC KIT

**SALE \$1,750**

DESC: KIT, QUICK COUPLER, HYDRAULIC

UNIT #CE018275Z  
SERIAL #CE018275Z-RW

WORKS WITH: SSL / CTL



## 336 RIPPER 51"

**SALE \$15,000**

DESC: RIPPER, PENETRATION 51"

UNIT #CE018317R  
SERIAL #9C900143

WORKS WITH: 336 EXCAVATOR



## SSL ROLLER

**SALE \$2,000**

DESC: SSL ROLLER

UNIT #CE019874Z  
SERIAL #143915

WORKS WITH: SSL / CTL



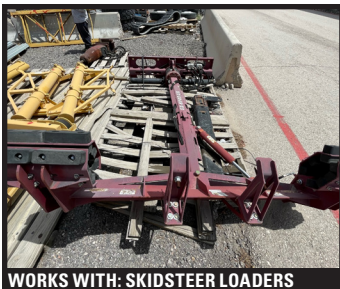
## SSL BLADE

**SALE \$1,000**

DESC: BLADE, 78", WELD-ON SSL INTERFACE

UNIT #CE014247Z  
SERIAL #CE014247Z-BG

WORKS WITH: SSL / CTL



## EZ-MH01

**SALE \$500**

DESC: MIRROR HANDLER

UNIT #CE004153Z  
SERIAL #773121-1012

WORKS WITH: SKIDSTEER LOADERS



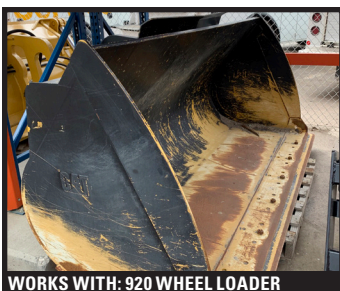
## 920/2.3 GP

**SALE \$4,500**

DESC: BUCKET - GP 2.3 YD3

UNIT #CE009294N  
SERIAL #CH-05-04786-18

WORKS WITH: 920 WHEEL LOADER



## 920/2.3 GP

**SALE \$4,500**

DESC: BUCKET - GP 2.3 YD3

UNIT #CE009511Z  
SERIAL #CH-03-03993-18

WORKS WITH: 920 WHEEL LOADER



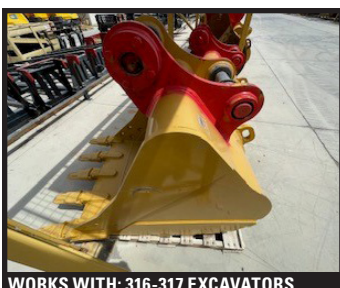
## 320/36 PL

**SALE \$5,000**

DESC: 36" PIN-LOCK BUCKET

UNIT #CE013017E  
SERIAL #0MHC06261

WORKS WITH: 320-325 EXCAVATORS



## 316/42

**SALE \$5,000**

DESC: BUCKET - SD 42" 1.00 YD3

UNIT #CE011022G  
SERIAL #0MHJ78926

WORKS WITH: 316-317 EXCAVATORS



## 308 QC

**SALE \$1,500**

DESC: COUPLER MANUAL LOCK

UNIT #CE012655Z  
SERIAL #2638715-25

WORKS WITH: 308 EXCAVATOR

Price does not include freight. All items subject to availability.



# SURPLUS ATTACHMENT INVENTORY



WORKS WITH: 926 WHEEL LOADER

**926/  
2.7**

**SALE \$4,800**

DESC: BUCKET - GP 2.7  
YD3 FUSION

UNIT #CE012691N  
SERIAL #A420BBK20024



WORKS WITH: 988 WHEEL LOADER

**988K  
ALUBE**

**SALE \$9,600**

DESC: AUTO LUBE  
SYSTEM

UNIT #CE012679X  
SERIAL #CE012679X-BG



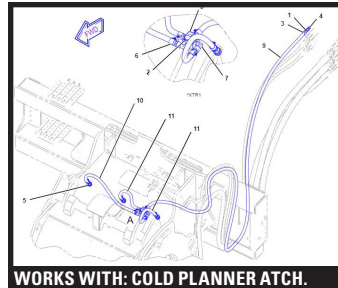
WORKS WITH: 903 WHEEL LOADER

**903  
TIRES**

**SALE \$2,000**

DESC: 33-15.5 X  
16.5 TIRES

UNIT #CE013396X  
SERIAL #CE013396X-BG



WORKS WITH: COLD PLANNER ATCH.

**PC306  
KIT**

**SALE \$200**

DESC: WATER  
SPRAY KIT

UNIT #CE018603Z  
SERIAL #CE018603Z-RW



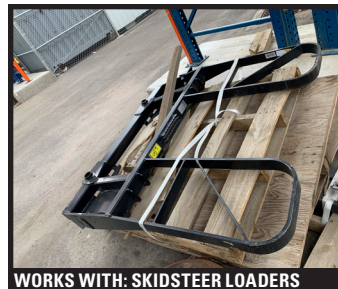
WORKS WITH: 415 BACKHOE LOADER

**415/1.0  
GP**

**SALE \$2,500**

DESC: BUCKET - GP 1.0  
YD3 PIN ON

UNIT #CE018469N  
SERIAL #GB201107316



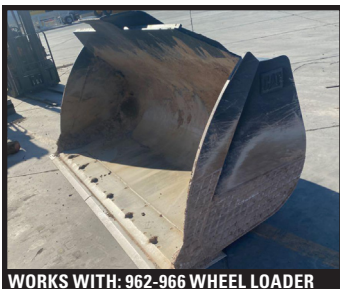
WORKS WITH: SKIDSTEER LOADERS

**SSL  
SPEAR**

**SALE \$1,300**

DESC: 49" DUAL BALE  
SPEAR FORKS

UNIT #CE018473Z  
SERIAL #2321BBS20042



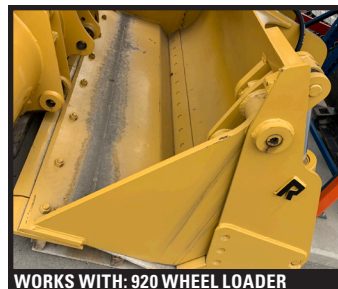
WORKS WITH: 962-966 WHEEL LOADER

**962/  
4.0**

**SALE \$13,600**

DESC: BUCKET -  
GP 4.00 YD3 FUSION

UNIT #CE015200N  
SERIAL #0Z1A26233



WORKS WITH: 920 WHEEL LOADER

**920/  
2.25MP**

**SALE \$20,500**

DESC: BUCKET -  
MP 2.25 YD3 FUSION

UNIT #CE018616N  
SERIAL #204716



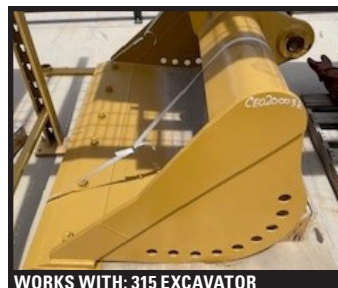
WORKS WITH: 950 WHEEL LOADER

**950M  
TIRES**

**SALE \$17,500**

DESC: 23.5 X 25  
BRIDGESTONE TIRES

UNIT #CE014823Z  
SERIAL #CE014823Z-BG



WORKS WITH: 315 EXCAVATOR

**315/60  
DC**

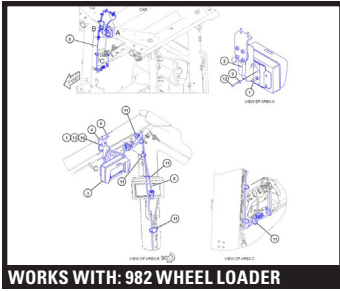
**SALE \$5,400**

DESC: 60" DITCH CLEANING  
BUCKET 0.97 YD3

UNIT #CE020003K  
SERIAL #0C9409857

Price does not include freight. All items subject to availability.

# SURPLUS ATTACHMENT INVENTORY

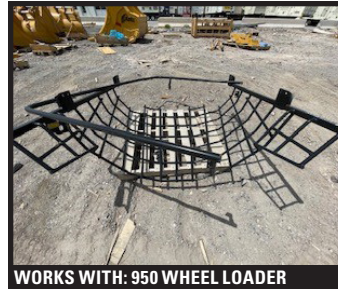


## 982 MONITOR

**SALE \$1,350**

DESC: SECONDARY  
DISPLAY MONITOR

UNIT #CE015842X  
SERIAL #CE015842X-BG

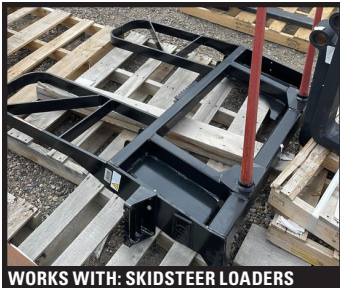


## 950M GUARD

**SALE \$3,400**

DESC: WINDOW  
FRONT GUARD

UNIT #CE014823X  
SERIAL #CE014823X-BG



## SSL SPEAR

**SALE \$1,300**

DESC: 49" DUAL  
BALE SPEAR FORKS

UNIT #CE020027Z  
SERIAL #23226BS20030



## 320/42 KK

**SALE \$35,000**

DESC: 42"  
KRYPTO KLAW

UNIT #CE020187G  
SERIAL #235709



## 305/QC SSL

**SALE \$1,600**

DESC: SKIDSTEER  
LOADER COUPLER

UNIT #CE020318Q  
SERIAL #A4227MS30038



## 289 TRACKS

**SALE \$5,000**

DESC: 17.7" RUBBER BLOCK  
TREAD TRACKS

UNIT #CE016214X  
SERIAL #CE016214X-BG

Price does not include freight. All items subject to availability.