

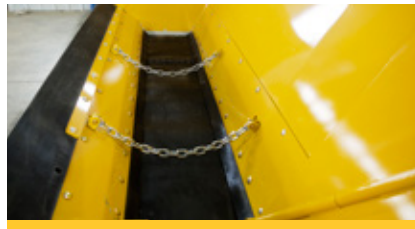
# W330B

ROAD WIDENER



## ONE TOUCH HANDLING.

When it comes to placing the right amount of material at the correct grade and slope in one pass, whether on a shoulder or elsewhere, the best equipment for the job is a Weiler road widener.



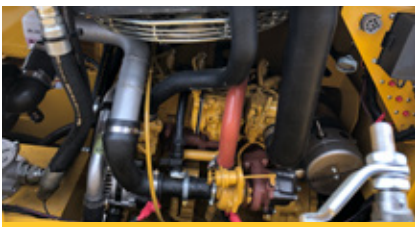
## MATERIAL DELIVERY.

A 3 yd<sup>3</sup> (2.2 m<sup>3</sup>) hopper means fewer truck exchanges during the workday. The 18" (457 mm) wide belt and maximum 400 fpm (121 m/min) belt speed provides quick placement of materials. Double flashing provides additional belt protection.



## PRECISE STRIKE-OFF

21" (533 mm) tall strike-off tools widen from 1' (.3 m) to 6' (1.8 m) and are capable of placing material up to 8" (203 mm) above and 10" (254 mm) below grade. Multiple tool sizes plus hydraulically adjustable tools ensure precise strike-off and can be set to exact grade and slope specifications.



## RELIABLE POWERTRAIN.

Equipped with a Cat C2.2T 67 hp (36 kW) engine. Front wheel hydrostatic drive with 2-speed motor and 2-speed gearbox delivers 150 fpm (45 m/min) working speed and 8 mph (12.8 km/hr) transport speed.



## VISIBILITY AND CONTROL.

All controls are located on a single panel within easy reach of the operator with foot pedal controlled belt. The operator is located back from the dump hopper and toward the outer edge of the machine for increased visibility.



## FAST SERVICE.

Self cleaning pulleys minimize material build-up and large doors enable easy access to engine and machine components. Caterpillar dealer service and support keep your machine up and running with limited down time.

# W330B SPECIFICATIONS

<b>*WEIGHT</b>	14,800 lb	6713 kg	<b>HOPPER CAPACITY</b>	3 yd <sup>3</sup>	2.2 m <sup>3</sup>	<b>ENGINE</b>	Cat® C2.2T Tier 4
<b>LENGTH</b>	16'	4880 mm	<b>CONVEYOR LENGTH</b>	9'	2743 mm	<b>TURNING RADIUS</b>	11' 3.35 m
<b>OPERATING WIDTH</b>	10'	3048 mm	<b>CONVEYOR WIDTH</b>	18"	457 mm	<b>FUEL CAPACITY</b>	30 gal 113 L
<b>TRANSPORT WIDTH</b>	8' 5"	2565 mm	<b>BELT SPEED</b>	400 fpm	121 m/min	<b>HYDRAULIC CAPACITY</b>	20 gal 75 L
<b>HEIGHT</b>	8'	2441 mm	<b>MAX WORKING SPEED</b>	150 fpm	45 m/min		
<b>WHEELBASE</b>	96"	2438 mm	<b>TRANSPORT SPEED</b>	8 mph	12.8 km/hr		

\*16,000 lb (7257 kg) with front counterweight option

## POWERTRAIN

Cat® C2.2T Tier 4 engine w/ 67 hp (50 kW)

Front wheel hydrostatic drive

2-speed motor

2-speed gearbox

150 fpm (45 m/min) max working speed

8 mph (12.8 km/hr) transport speed

Differential lock on front axle

2-wheel steering standard

11' (3.3 m) turning radius

Fail safe parking brake

3255/70 22.5 ply tires

Hydraulic on demand fan

## OPERATING ENVIRONMENT

Access to all machine controls from console

Belt on and off controlled with foot pedal, optional

Seat position allows for optimal visibility

Wrap around safety rails and kick plates

Built in tool box

## MATERIAL DELIVERY

3 yd<sup>3</sup> (2.2 m<sup>3</sup>) hopper capacity

9' 4" (2844 mm) dump hopper opening

Fold-able front hopper for 8'5" (2565 mm) transport width

9' (2743 mm) long, 18" (457 mm) wide chain-driven conveyor

Double flashing belt protection

Right side material discharge

400 fpm (121 m/min) belt speed

Adjustable push roller

## TOOLING

1' (0.3 m) to 6' (1.8 m) widening width

8" (203 mm) above and 10" (254 mm) below grade

21" (533 mm) tall strike-off tools

1' (0.3 m), 2' (0.6 m) and 3' (0.9 m) standard tool

2'-3' (0.6 m - 0.9 m) adjustable tool option

Accommodates large spoil pile and surge capacity

## SERVICE/MAINTENANCE

Multiple engine access doors

Easily accessible battery compartment

All valves and cylinders easily accessible

Doors equipped with anti-theft locks

Braided electrical harnesses and sealed connections

Color-coded electrical wires

## OPTIONAL EQUIPMENT

Truck hitch

Hydraulically extendable push roller

Locking vandal covers

LED strobe light

Spray down system

Work lights (3)

Premium LED work lights (5)

1200 lb (544 kg) front weight kit

1' (.3 m), 2' (.6 m), 3' (.9 m) strike-off tools

2' - 3' (.6 - .9 m) telescoping strike-off tool

Extending end gate with chains

Conveyor foot pedal

## SALES AND SERVICE

Sold and serviced exclusively through Caterpillar dealers worldwide.

## WARRANTY

12 months standard. Extended warranty available.