



RENTAL MODULE

25 Ton

Cat®/York® air conditioning units are self-contained and provide conditioned air for outdoor rental applications. Each unit includes: York air conditioning unit (scroll compressor), with a weather-resistant control center and a heating element, mounted on a formed steel base frame that includes heavy-duty safety wire grating condenser protection. This unit is reinforced with an industrial rugged rental-ready framing for increased durability and strength. Units designed in accordance with industry guidelines and third party safety and quality standards.

TECHNICAL SPECIFICATIONS

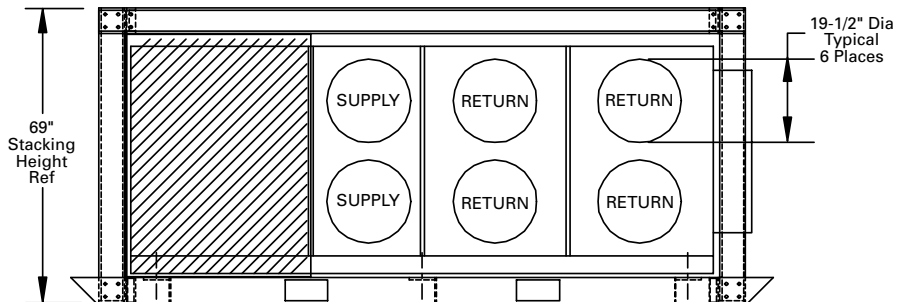
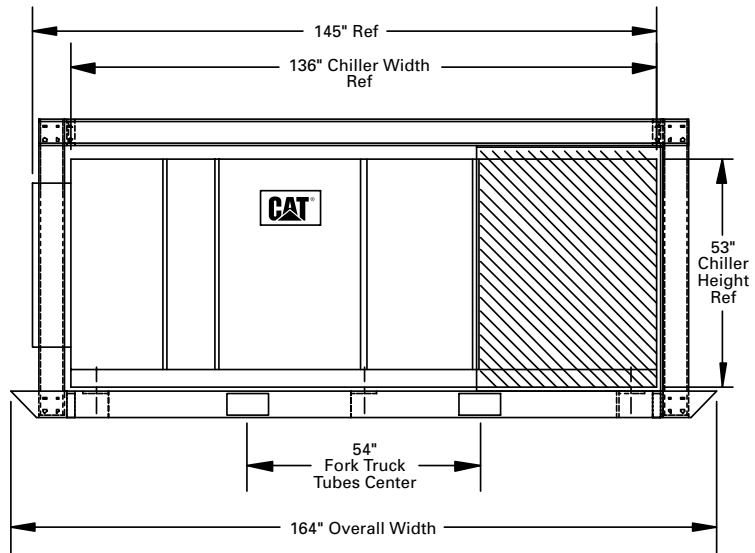
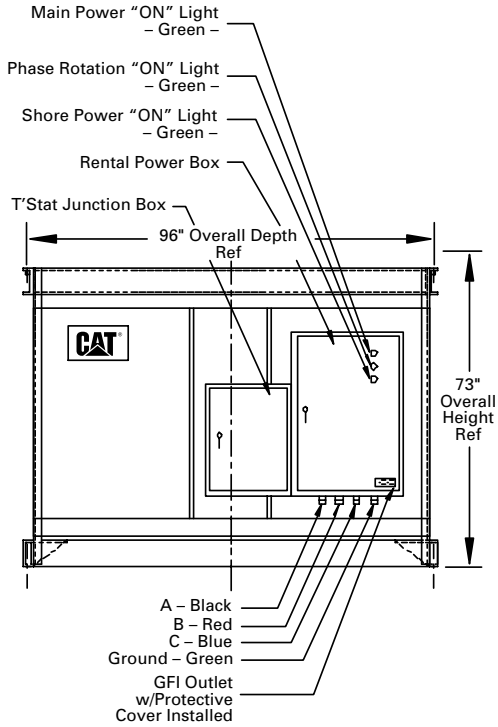
Model..... DX25
 Dimensions — ft (m)
 Length 13' 8" (4.17)
 Width 8' (2.44)
 Height..... 6' 1" (1.85)

Total shipping weight — lb (kg)..... 3,230 (1466.4)
 Duct connections (6) — in (mm) 19.5 (495.3)
 Filters 2" (30% efficient)
 Single point power supply..... 460 volt, 3-phase, 60 hertz with ground

TECHNICAL DATA

		460 Volt/3-Phase/60 Hz with Ground
Electrical Data		
Total full load amps or running load amps		
Cooling only	amps	64
Heating only	amps	87
System Control		
Electromechanical system control		Standard
Fan control		Constant Volume
Space temperature control		Standard
Discharge air temperature control		Standard
Fan Data		
Design air flow	cfm (m ³ /min)	10,000 (283.17)
Design total static pressure	in (mm)	1.5 (38.1)
Fan type		Plenum
Fan control		Constant Volume
Motor power/speed	hp/rpm	15/1160
Cooling Data		
Design capacity	tons	25
Design conditions:		
Entering air temperature (dry bulb/wet bulb)	°F (°C)	80.0/67.0 (26.6/19.4)
Leaving air temperature (dry bulb/wet bulb)	°F (°C)	55.7/54.0 (13.2/12.2)
Coil construction		Copper Tube/Aluminum Tube
Rows		4
Fins per inch		13.5
Heating Data		
Type		Electric
Capacity	kW	72
Heating	MBH	246

DIMENSIONS



Consult your Caterpillar representative for more details.

www.CAT-ElectricPower.com

©2001 Caterpillar
All rights reserved.
Printed in U.S.A.