

T H E S U L L A I R

# 425

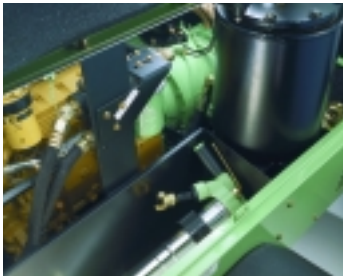
## PORTABLE AIR COMPRESSOR

425 CFM AT 100 PSIG—200 L/S AT 7 BAR



- ROTARY SCREW COMPRESSOR
- REMOVABLE MODULAR CANOPY
- ADJUSTABLE HEIGHT HITCH
- E-Z LUBE AXLE
- LARGE TOOL BOX COMPARTMENT
- CURBSIDE INSTRUMENT PANEL
- SSAM—SHUTDOWN SYSTEM & ANNUNCIATION MODULE
- PROTECTIVE SHUTDOWN SWITCHES
- IDLE WARM-UP VALVE
- ROCKER TYPE START SWITCH
- FUEL/WATER SEPARATOR
- TWO STAGE AIR FILTERS
- 0 TO 100% CAPACITY CONTROL
- PNEUMATIC INLET VALVE
- AWF COMPRESSOR FLUID
- DURABLE POWDER COAT FINISH
- WIDE TRACK
- BUMPER WITH RECESSED TAIL LIGHTS

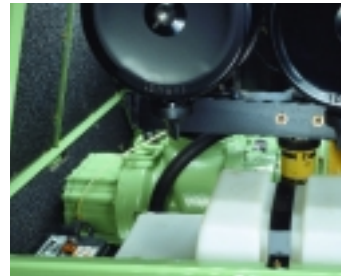




**Large Tool Box Compartment**  
Sullair pneumatic tool sold separately.



**E-Z Lube Axle**  
Offers convenient wheel bearing lubrication thru zerk fittings.



**Rotary Screw Compressor**  
Single-stage, fluid flooded. Cast iron housing is dimensionally stable, thick-walled and machined to close tolerances.



**Rear Bumper**  
Features recessed tail lights and license plate light.

**DESIGNED FOR TOTAL ACCESSIBILITY AND RELIABILITY**

**Rotary Screw Compressor**

**Ample Service Doors**

Large side doors provide access to fuel tank, engine, compressor and tool compartment.  
Rear service panel provide access to side-by-side compressor fluid cooler and engine radiator.  
Serviceable components within easy reach. Routine maintenance is simplified. Reduced downtime and service cost. Service doors feature non-rusting hinges and stainless steel T-type door retainers.

**Multi-Piece Canopy**

Easy and inexpensive to replace, if damaged.

Easily removed as one assembly for major service.

Exposed, single point lifting bail.

**0 to 100% Capacity Control**

Pneumatic inlet valve and unloaded starting.

**Highway Towable Running Gear**

3" square drawbar.  
Adjustable height hitch (15", 17", 19").  
Quick-change hitch.  
Screw jack with pad.  
Transport security chains.  
E-Z lube axle lubrication.  
Heavy duty leaf spring suspension.

**Curbside Instrument Panel**

Hinged, padlockable cover.  
Mechanical air pressure gauge and

hourmeter  
Rocker type engine start switch  
Idle warm-up valve.

**SSAM—Shutdown System & Annunciation Module**

Shutdown with annunciator light for high compressor temperature, high engine coolant temperature, low engine oil pressure and engine underspeed.  
Engine warning and shutdown fault code annunciation.

Electronic engine speed control. (JD only)

**Two-Stage Dry Type Air Filters**

Separate filters for engine and compressor.

**Durable, Baked-On Powder Coat Finish**

**AWF Compressor Fluid**

All-weather, all-climate fluid.

**Air End Warranty**

2 year standard warranty.  
5 year or 10,000 hour warranty when continuously serviced at the recommended intervals with Sullair AWF Compressor Fluid and filters.

**Quiet Operation**

Meets US EPA Sound requirements of 76 dBA @ 7 meters.



This product is manufactured to the highest quality standards in an ISO 9001 certified quality system.

**SULLAIR'S OPTIONS ALLOW YOU TO CUSTOMIZE THE COMPRESSOR TO MEET YOUR SPECIFIC REQUIREMENTS WITHOUT PAYING FOR ITEMS YOU DO NOT NEED.**

Filtration for instrument quality air.  
Aftercooler.  
Special paint.  
Hose reels, single and dual.  
Spark arrestor.

Cold weather starting aid.  
Fuel level gauge.  
Brakes (Recommended where required by law.)  
Mechanical parking brakes.

Ball hitch.  
Retractable pneumatic swivel third wheel.  
Air filter maintenance indicators.  
Gauge package.  
Tachometer.

Low fuel shutdown.



**SPECIFICATIONS, WEIGHTS AND DIMENSIONS—SULLAIR 425 PORTABLE COMPRESSOR**

Delivery @ Rated Pressure	Rated Pressure psig bar	Pressure Range psig bar	Designated Model	Weight* (wet) lbs kg	Weight* (dry) lbs kg	Length (drawbar) in mm	Length (canopy) in mm	Width in mm	Height in mm	Track Width in mm	Tire Size (load range)
425 cfm 200 L/S 12.0 m <sup>3</sup> /min	100 7	80–125 5.5–8.5	2-Wheel	4150 1888	3825 1735	151 3835	95.7 2431	78.9 2004	68.5 1740	67.5 1715	H78 X 15 ST (D)
			Less Running Gear	4020 1823	3705 1681	– –	95.7 2431	58.2 1478	57.5 1460	– –	– –

Engine Make	Engine Type	Engine Model	Displacement cu in cc	Cylinders	Bore and Stroke in mm	Rated Speed rpm	Rated Power hp kW
John Deere (Tier 2 Emission Compliant)	Diesel	4045HF275	275 4507	4	4.19 X 5.00 106 X 127	2300	125 93
Caterpillar (Tier 2 Emission Compliant)	Diesel	3054CDITAAC	269 4409	4	4.13 X 5.00 105 X 127	2200	130 97



www.sullair.com

SULLAIR CORPORATION, 3700 East Michigan Blvd., Michigan City, IN 46360 Telephone: 1-800-SULLAIR or 1-219-879-5451 Fax: 1-219-874-1504  
 SULLAIR EUROPE S.A., Zone des Granges, BP 82, 42602 Montbrison, Cedex, France, Telephone: (33) 4.77.96.84.70 Fax: (33) 4.77.96.84.99  
 SULLAIR ASIA LTD., 74 Joo Koon Circle, Jurong, Singapore 629093, Telephone: (65) 861-1211 Fax: (65) 861-2967 Telex RS25117  
 SHENZHEN SULLAIR ASIA INTERNATIONAL CO., LTD., Zuo Pao Tai Road, Chiwan, Shekou, Shenzhen 518068, China, Telephone: (86) 755-6851686 Fax: (86) 755-6853473  
 SULLAIR TAIWAN LTD., 2nd Fl. No. 96, Chien Kuo N. Road, Taipei 104, Taiwan, Telephone: 886-2-505-7256, Fax: 886-2-505-5480  
 SULLAIR ARGENTINA, Goncalves Dias 1145, 1276 Buenos Aires, Argentina, Telephone: 541-303-0621, Fax: 541-303-0626